

working for clean rivers



The Impact of Restoration on Johnson Creek Flooding

MARIE WALKIEWICZ

Eastside Watersheds

Bureau of Environmental Services

May 26, 2016



ENVIRONMENTAL SERVICES
CITY OF PORTLAND

NICK FISH, COMMISSIONER
MICHAEL JORDAN, DIRECTOR

Today's Presentation

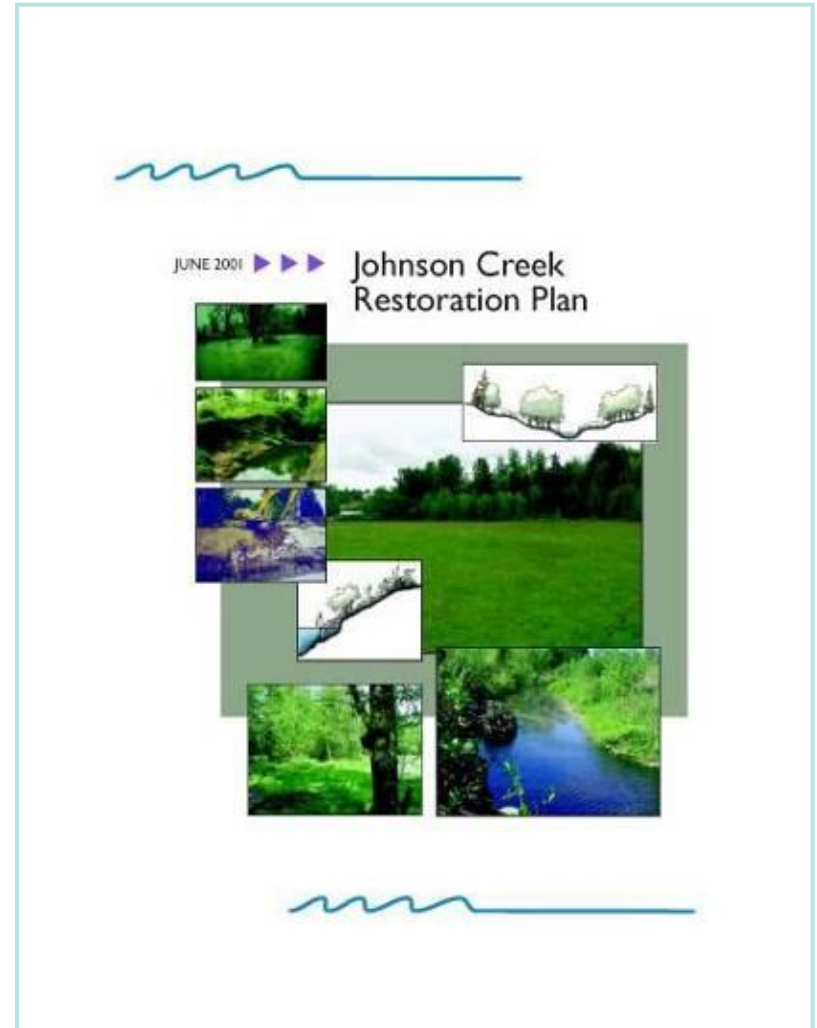
- Johnson Creek Restoration Plan overview
- Project highlights
- Impact on flood regimes
- Next steps



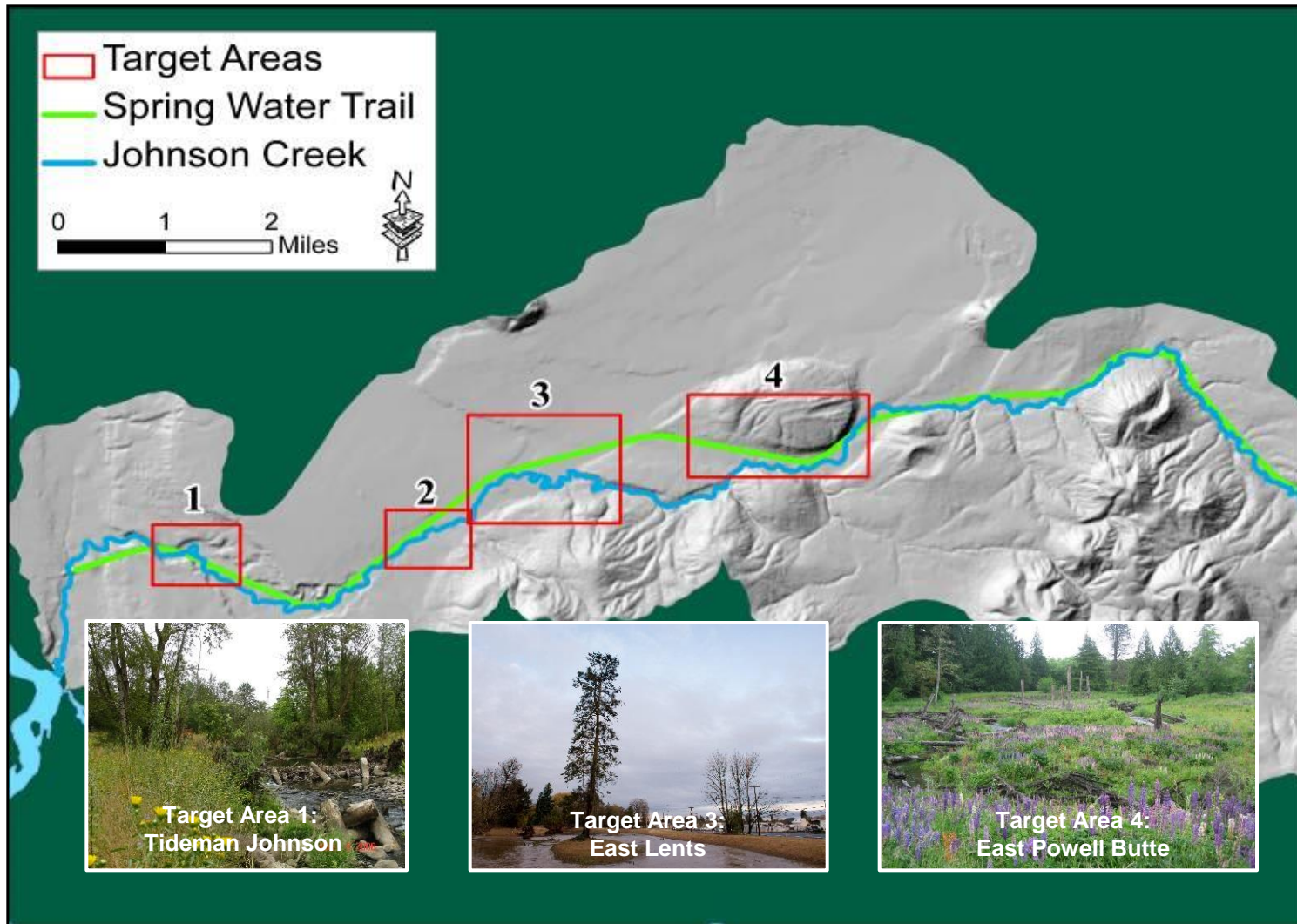
Johnson Creek Restoration Plan 2001

Goals:

- Improve water quality
- Enhance fish and wildlife habitat
- Mitigate the nuisance (10-year) flood



Johnson Creek Restoration Plan 2001



East Powell Butte – *Schweitzer Project*



Johnson Creek Restoration Plan

Results to date:

145 acres restored

9 major projects completed

2.5 stream miles restored

250 acre-feet of flood storage added

Work to do:

300 additional acre-feet of storage needed within Portland

1,800 additional acre-feet of flood storage needed
watershed-wide



Flood Conditions – *Nuisance Flooding*

- Foster Road flooded every other year
- Frequent flooding at Bell Station
- Localized flooding in other areas



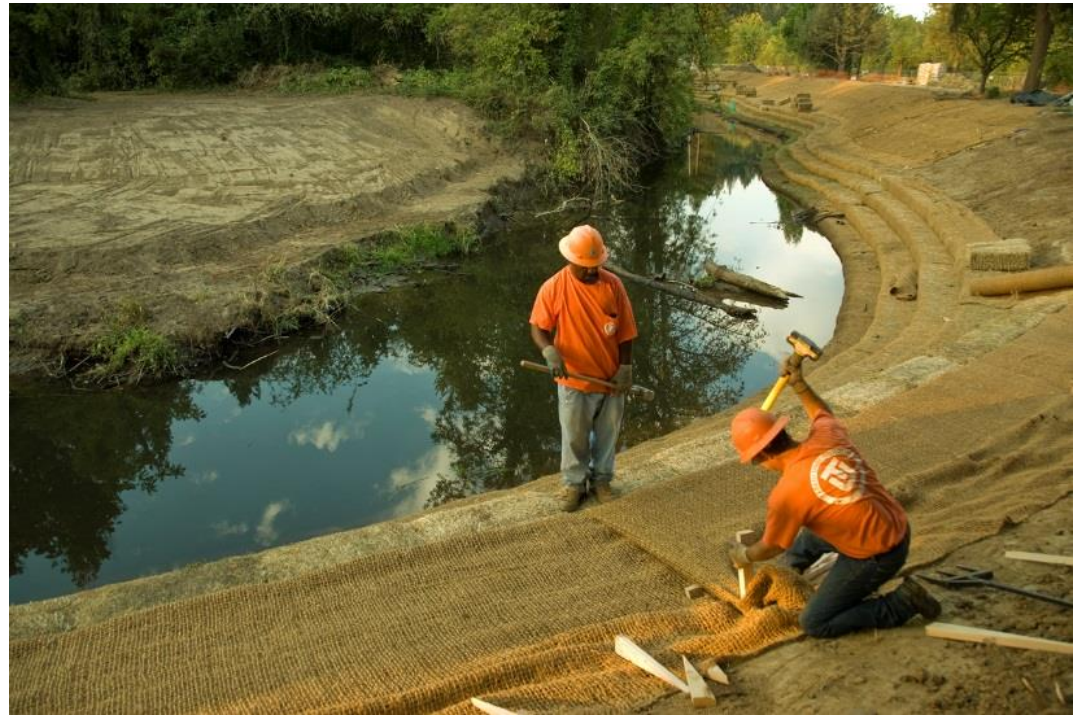
Flood Conditions – 2009



Floodplain Restoration – *Foster Floodplain*

Completed in 2013

- 70 acres
- Added 120 acre-feet of flood storage
- Restored 3,800' streambank
- Reduced flooding every 6-8 years

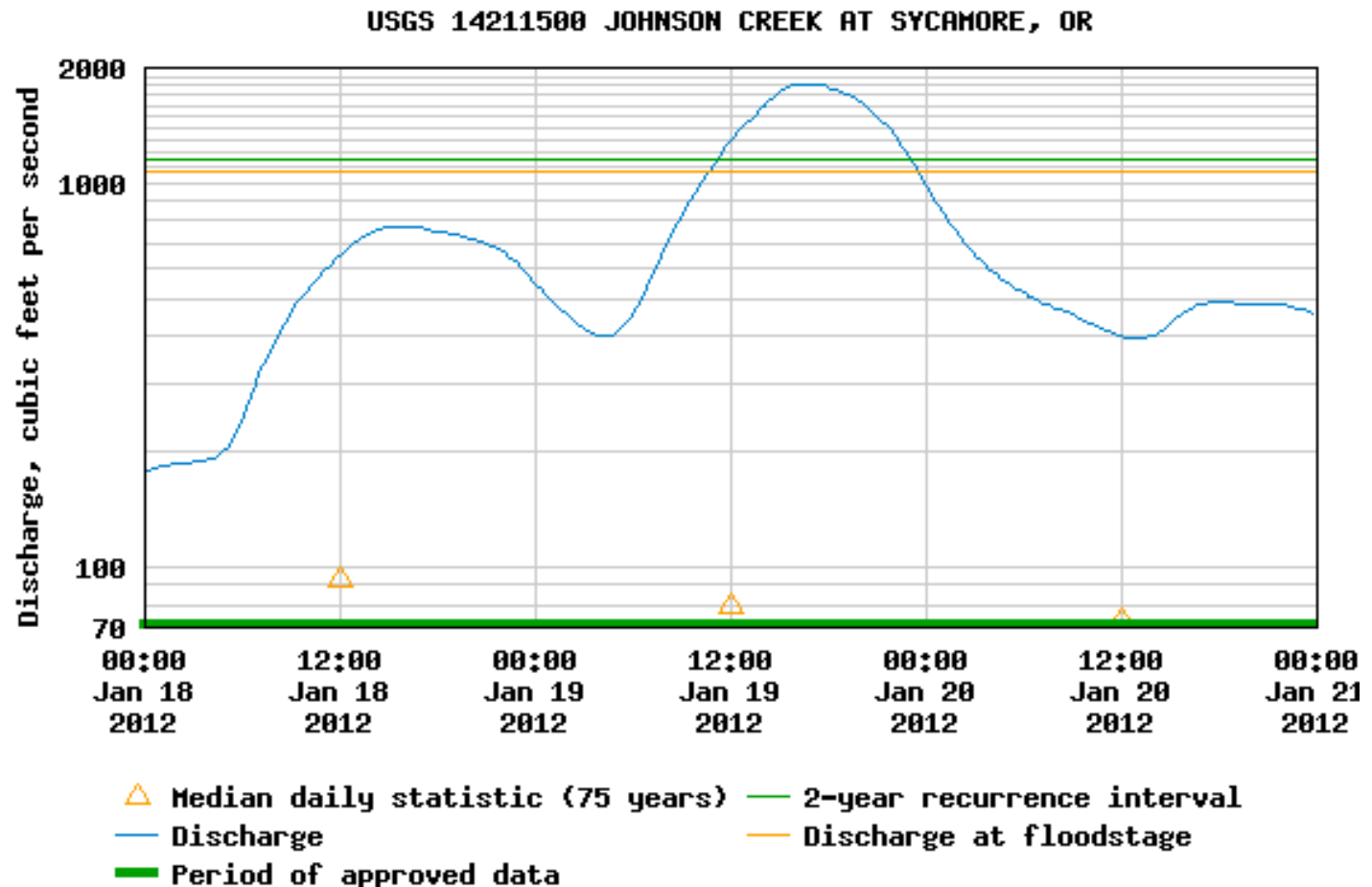


Flood Conditions: 2012

5.4 year storm

13.21' peak

1,820 cfs



Flood Conditions

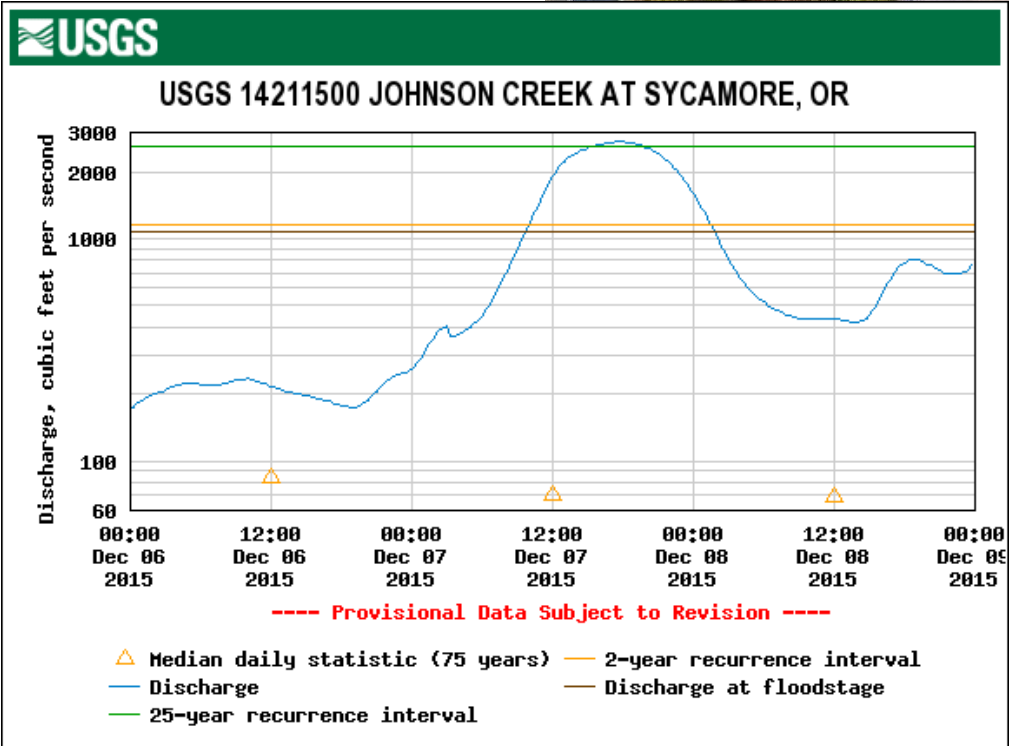
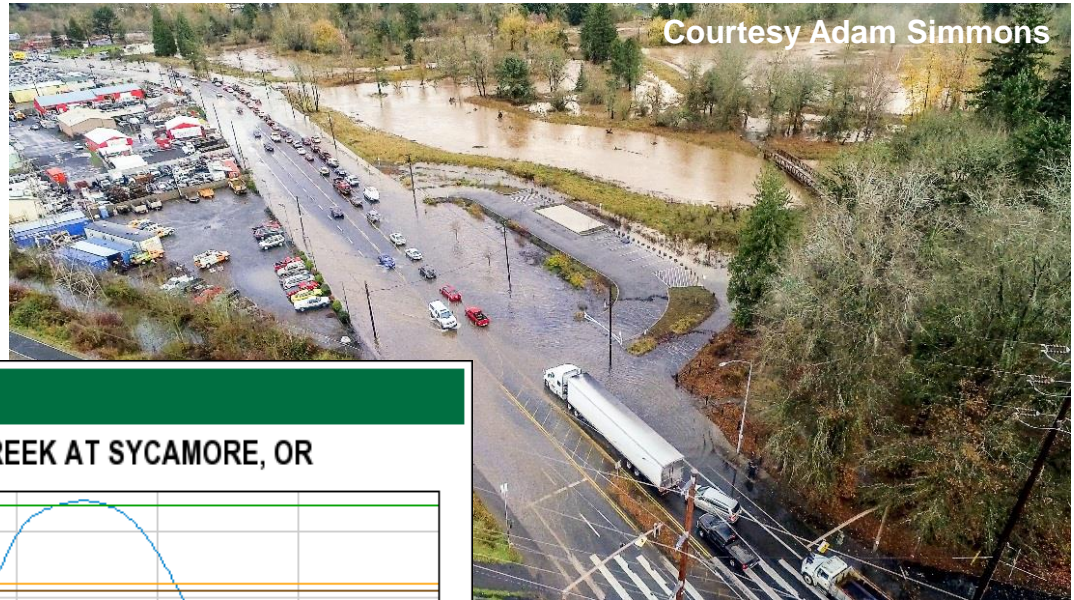


Flood Conditions: *December 2015*

25 year event

15.33' peak

2,740 cfs



So it helped?



Yes, but...

It's complicated...

- Rainfall
- Peak
- Volume
- Duration

Water Year	Date	H (ft)	Q (cfs)
2015	Dec. 07, 2015	15.33	2,740
1997	Nov. 19, 1996	15.30	2,550
2009	Jan. 02, 2009	14.69	2,590
1965	Dec. 22, 1964	14.68	2,620
1996	Feb. 07, 1996	14.28	2,350
1949	Feb. 10, 1949	13.77	2,110
2012	Jan. 19, 2012	13.21	1,820



Next Steps – Analysis

- Establish new flood stages
- Update flood models



Flood Categories (in feet)

Major Flood Stage:	14
Flood Stage:	11
Action Stage:	10

Historic Crests

- (1) 15.33 ft on 12/07/2015
 - (2) 15.30 ft on 11/19/1996
 - (3) 14.69 ft on 01/02/2009
 - (4) 14.68 ft on 12/22/1964
 - (5) 14.50 ft on 12/01/1937
- [Show More Historic Crests](#)

(P): Preliminary values
subject to further review.

Recent Crests

- (1) 15.33 ft on 12/07/2015
 - (2) 13.21 ft on 01/19/2012
 - (3) 14.69 ft on 01/02/2009
 - (4) 11.90 ft on 12/03/2007
 - (5) 11.28 ft on 12/14/2003
- [Show More Recent Crests](#)

(P): Preliminary values
subject to further review.

Low Water Records

- (1) 0.33 ft on 08/14/1940
 - (2) 0.65 ft on 08/18/1959
 - (3) 0.70 ft on 09/06/1955
- [Show More Low Water Records](#)



FEMA

For more information on your flood
risk go to www.floodsmart.gov.



Next Steps – *Implementation*

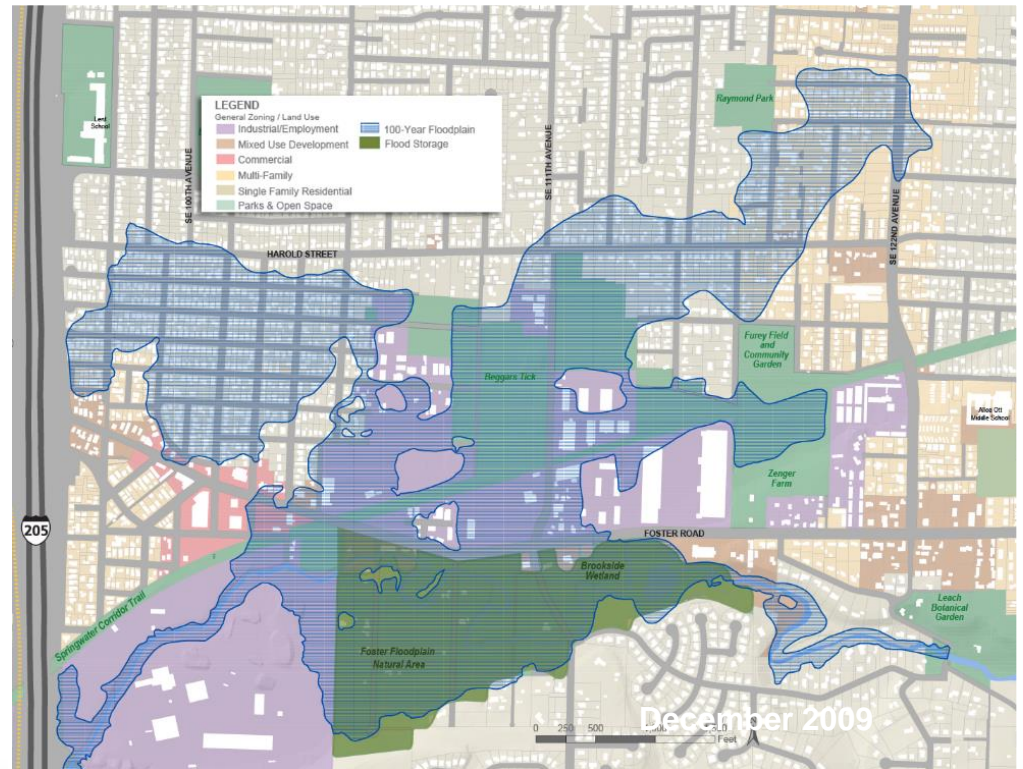
Continue Johnson Creek Restoration Plan

- Springwater Wetlands
- Willing Seller Program



Next Steps – *Lents Stabilization*

- Multi-stakeholder effort
- Mitigate 100-year flood
- Stabilize housing
- Promote job growth



Thank you!

