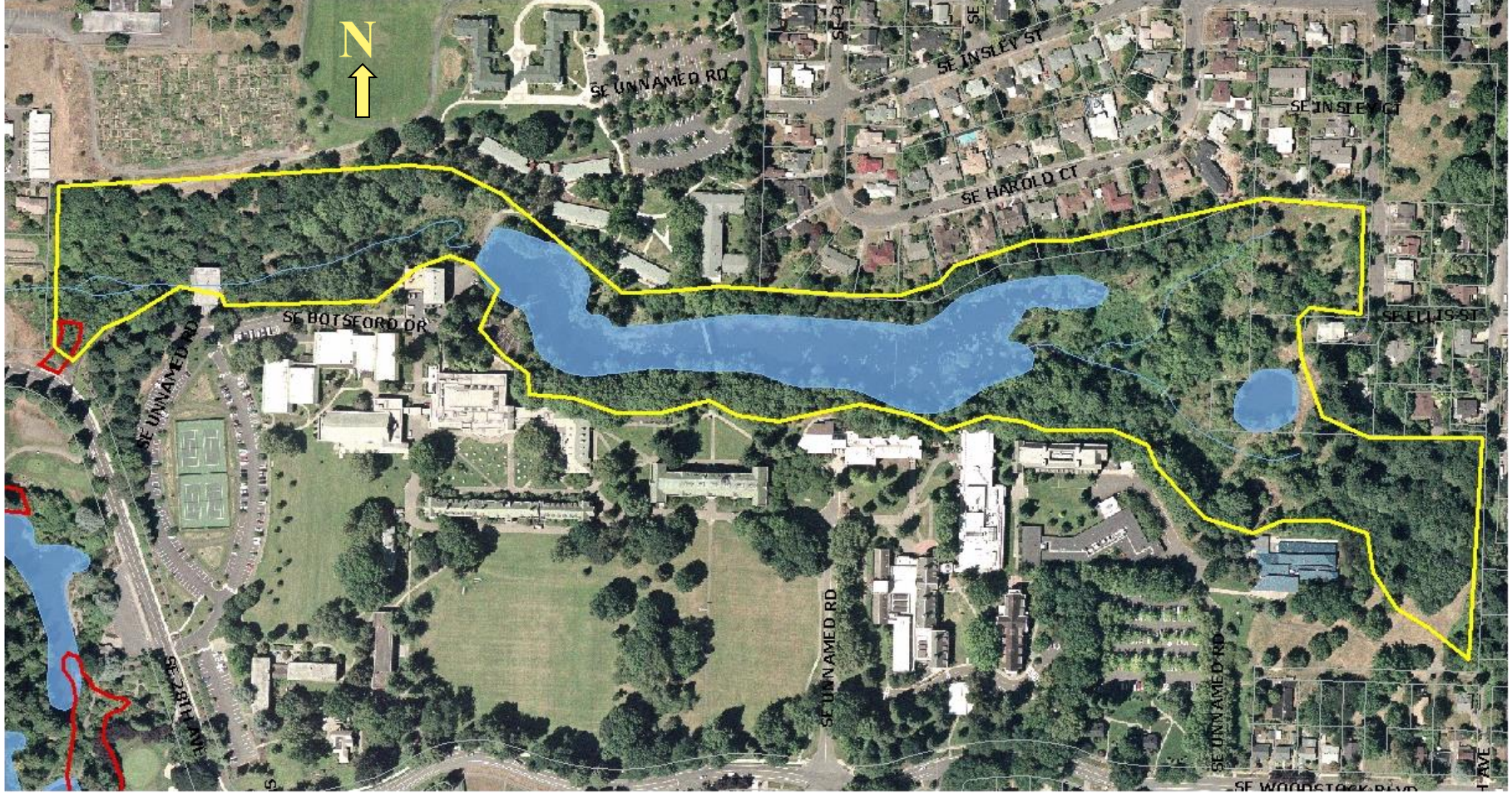


# Reed College Canyon Restoration



By Zac Perry



































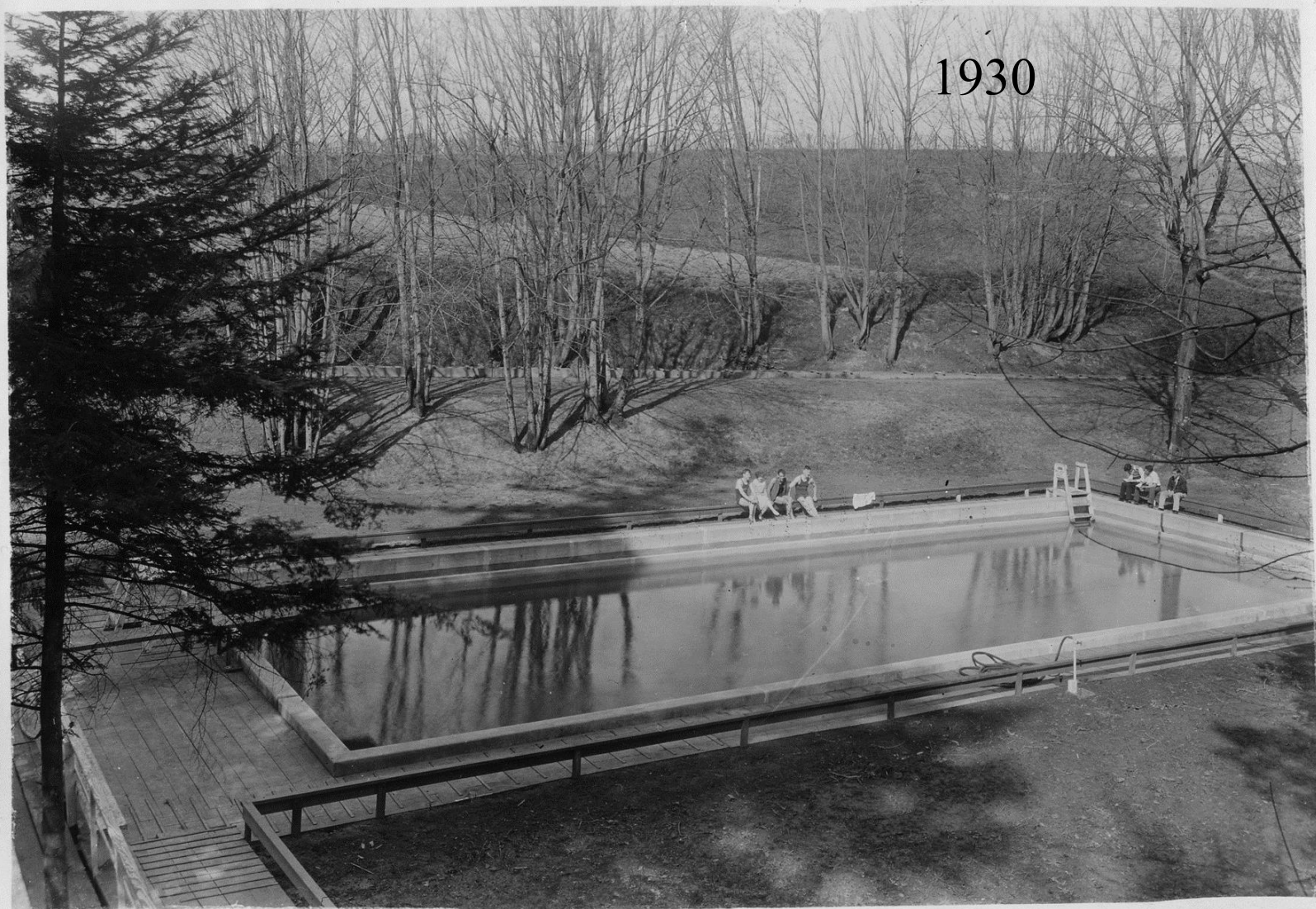
## Physical Obstacles



1929 land bridge constructed



1930









2000













2002





# On Site-Plant Propagation





# Field Propagation





# Greenhouse Propagation









# In Stream Work









1200+ students/yr.(K-12)









# Classroom without walls

- Introductory Biology
- Population Biology
- Conservation Biology
- Microbiology
- Theatre
- Animal Behavior Ecology

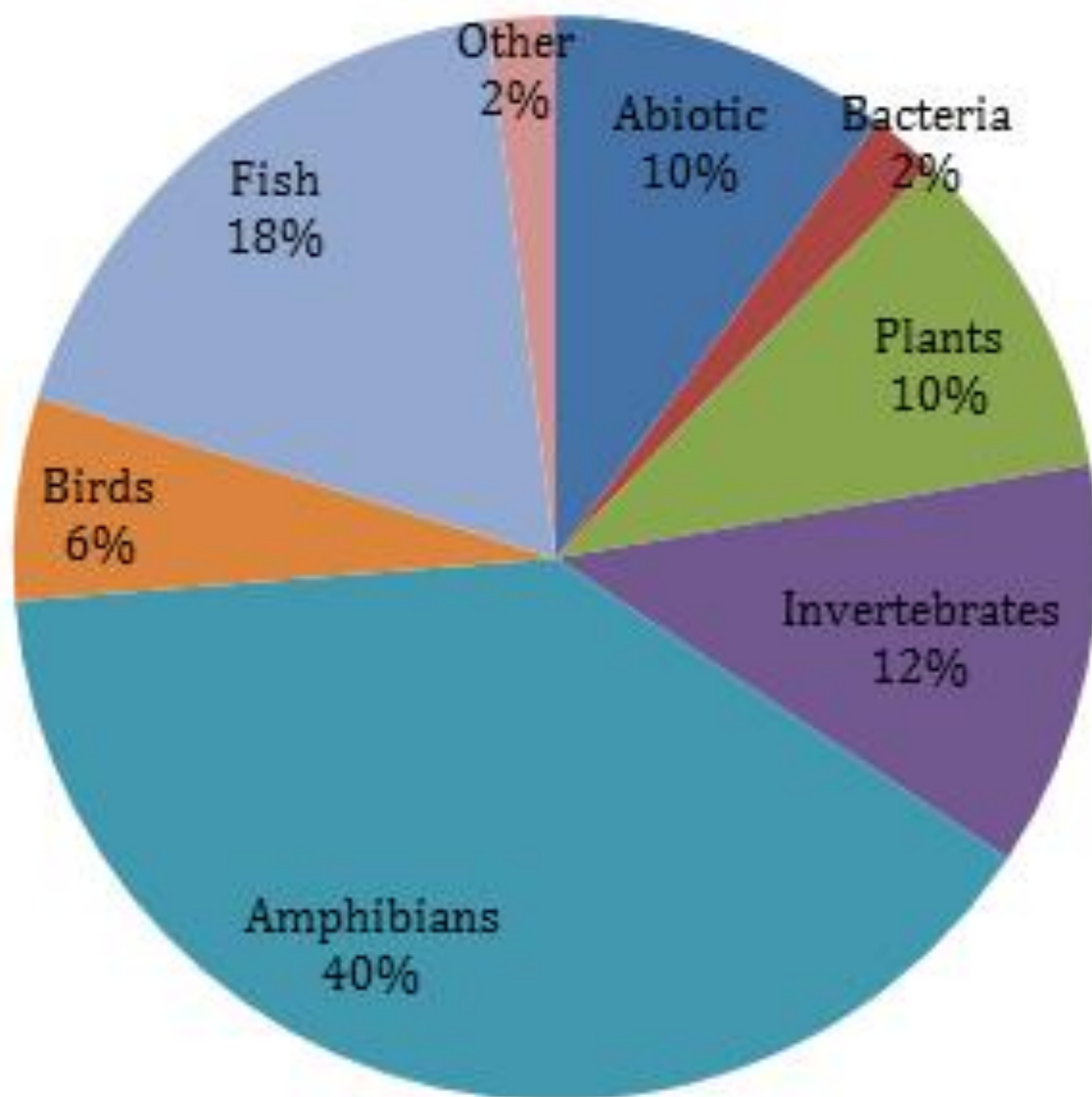




# Senior Projects

- Between 1925 and 1999, only 14 students chose a topic that related in some way to the canyon. In recent years, there has been an upsurge in interest in the local ecosystem. Between 1999 and 2016, 64 students chose to incorporate the canyon into their senior thesis research.







# Canyon Day 1912



# Canyon Day 1914





# Canyon Day

-April and October-



- Removal of non-native vegetation
- Native plant reintroduction
- Mulching of new plants
- Trail construction















## Canyon Restoration Phase 2



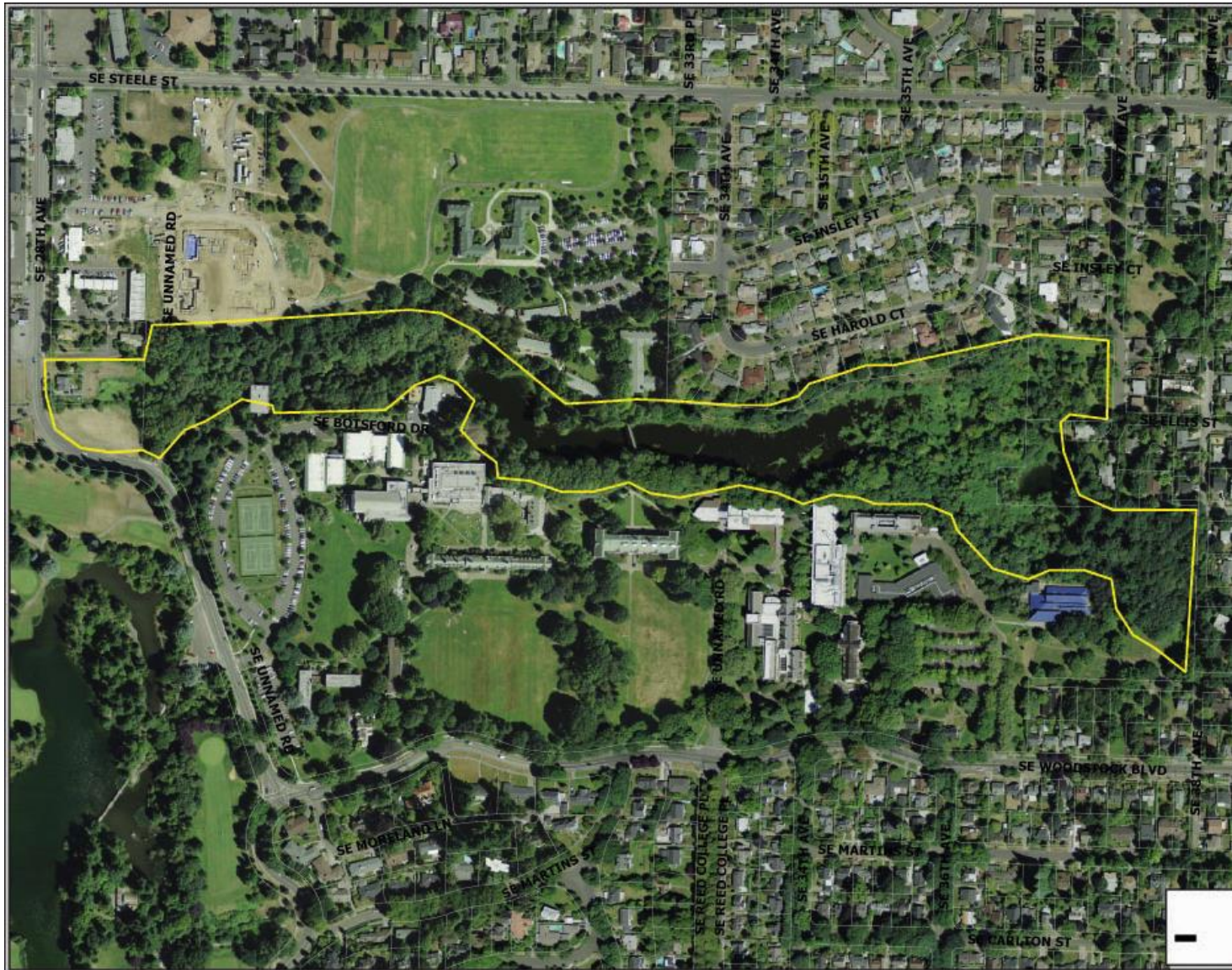
# **Crystal Springs – Farm Property Enhancement**

**Reed College Portland, Oregon**

**January 2008**







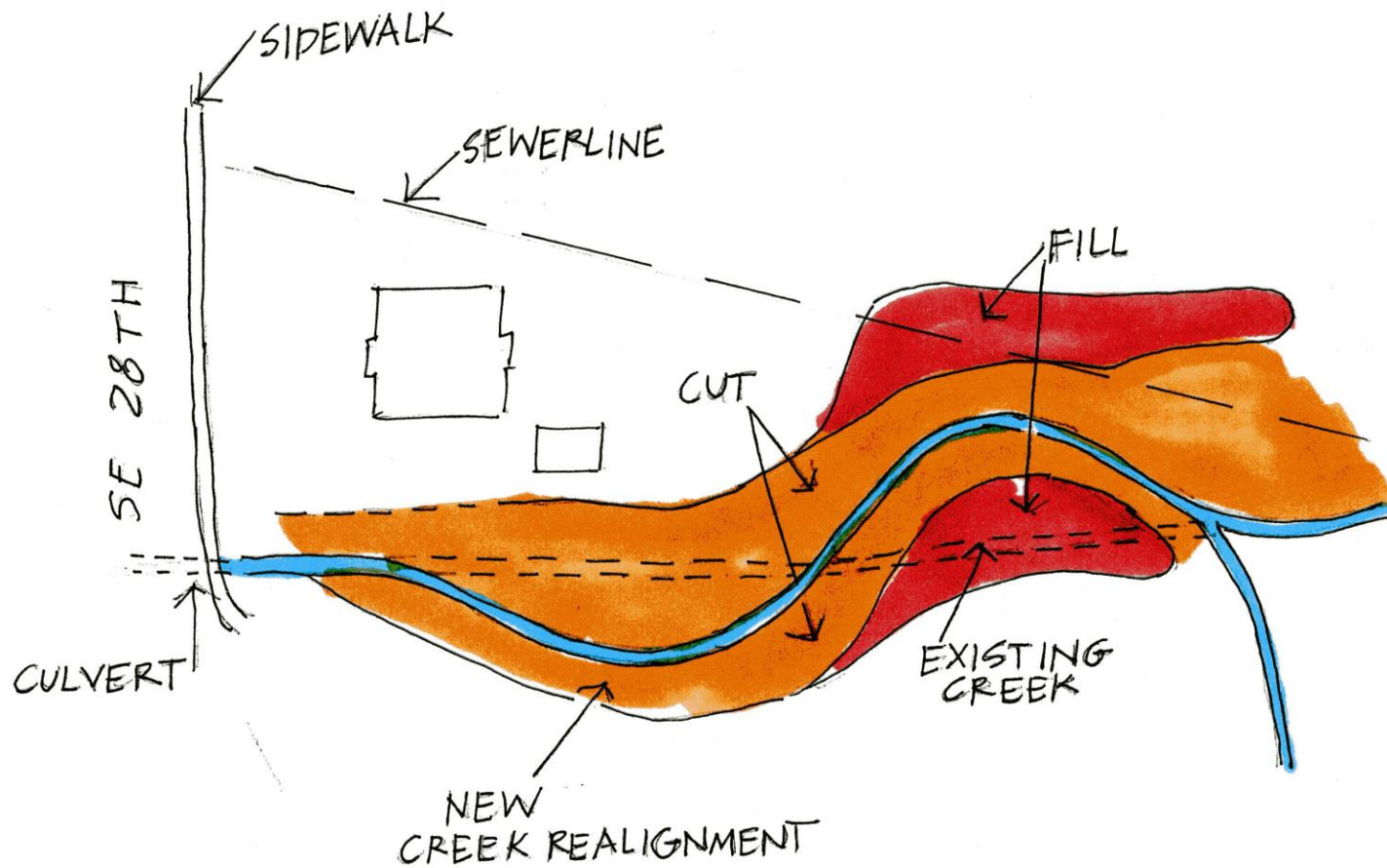


































2011





2011













2011





2016





# Common Wildlife











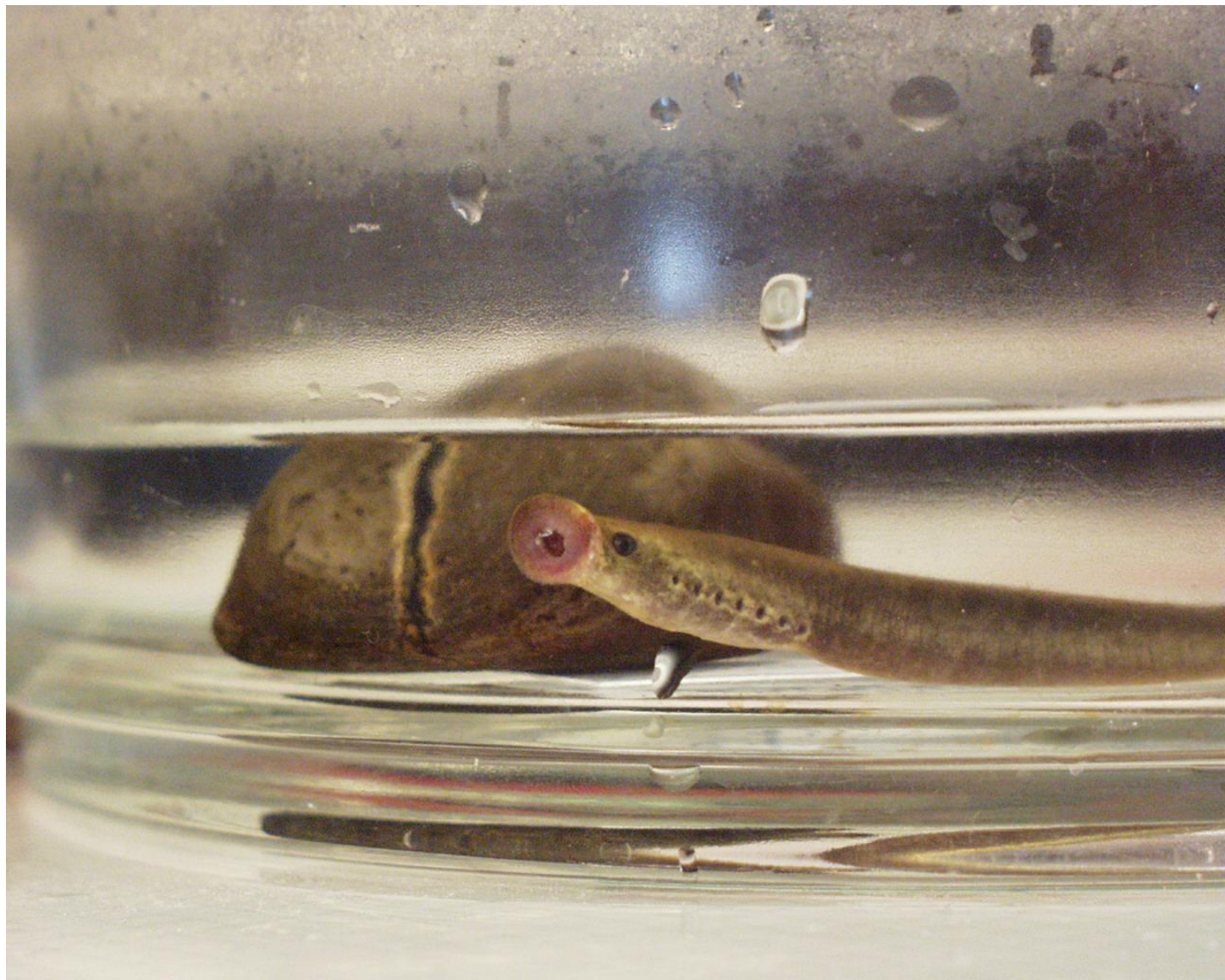


















































# **For more information:**



zac.perry@reed.edu

Walk the Canyon on line:

[www.reed.edu/canyon](http://www.reed.edu/canyon)