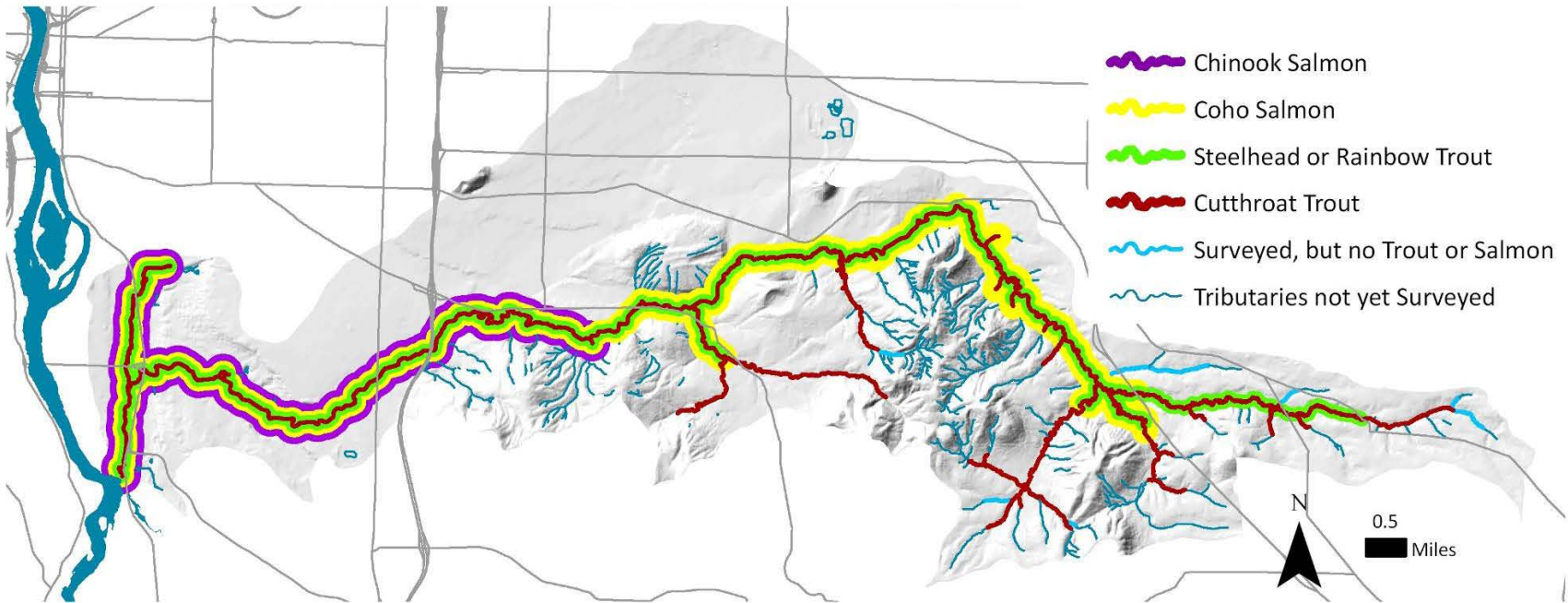


Field documented fish presence



- Fish barriers?
- Winter refuge?
- Summer refuge?



Western pearlshell mussel



Lamprey ammocete



Pacific giant salamander



Rainbow trout



Native cutthroat and coho juvenile



Northern pike minnow



Speckled dace



Large-scale sucker



Redside shiner



Common carp



Yellow bullhead



Bluegill



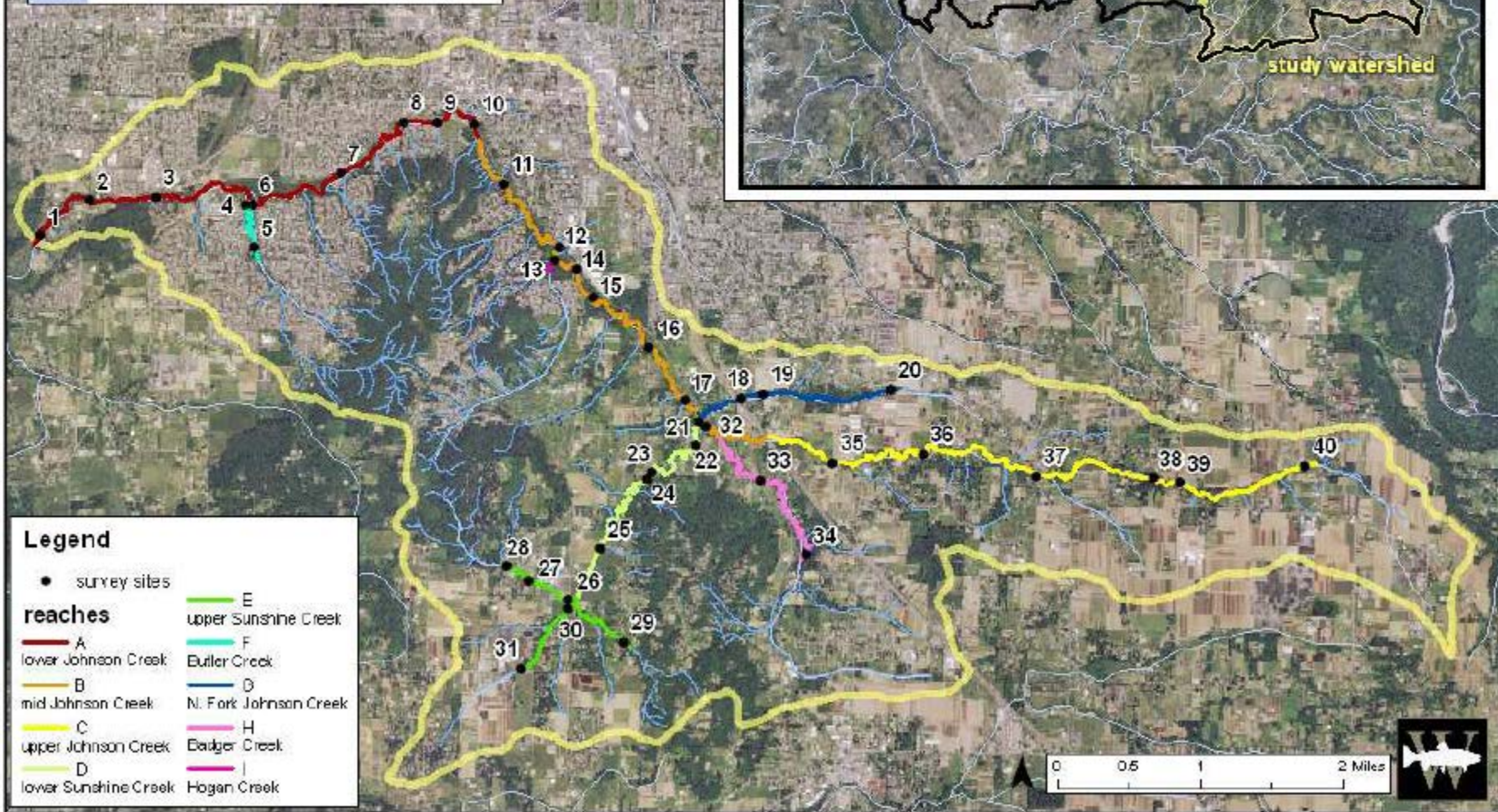
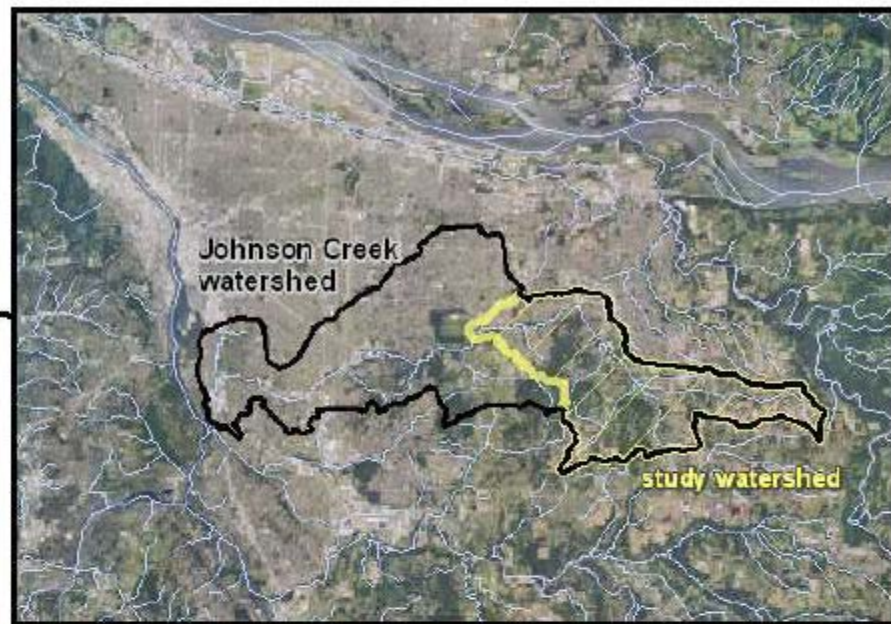
Asian clam

Upper Johnson Fish Survey

Study design

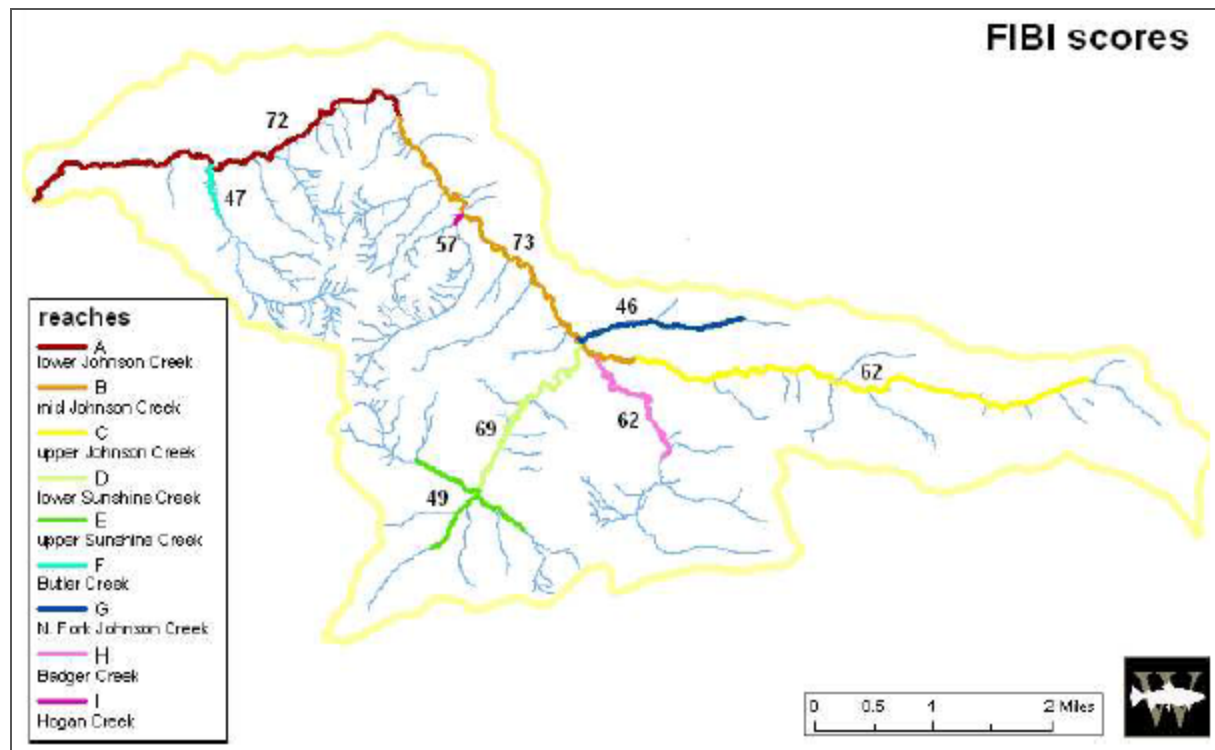
- Fish-IBI in late-summer base flow (September 2011)
 - Single-pass electrofishing survey, 200m reaches
- Extent of fish distribution in high flow (March/April 2012)







Results ☐ September 2011


- 4643 fish netted
- 10 native fish species
- 4 non-native fish species
- F-IBI ranged from 46 to 73 out of 100



Streams with year-round flow and habitat suitable for salmon and trout

 Streams accessible to salmon and trout

 Blocked to Salmonids

 Blocked reaches prioritized for fish passage restoration

 Springwater Corridor Trail



Cutthroat at Cottrell Rd

Lessons from McCarthy Creek?

ODFW: 1,000 fish killed by fertilizer spill

By Joel Iwanaga and KOIN 6 News staff

Published: July 11, 2013, 4:45 pm



Dead fish are seen in the McCarthy Creek Tributary near Cornelius Pass one day after a truck spilled a tanker-full of liquid fertilizer nearby. (July 11, 2013. Report It - Sean and Bruce Penney)

PORTLAND, Ore. (KOIN) — One day after approximately 2,400 gallons of liquid fertilizer leaked from a rolled-over semi-truck, more than 1,000 animals in the nearby McCarthy Creek Tributary has died.

The [Oregon Department of Fish and Wildlife](#) was at the scene Thursday near NW Cornelius Pass Road between Highway 30 and NW Skyline Boulevard. So far **fish, newts and salamanders have been found dead**. The deaths are limited to aquatic life.





Unnamed Tributary at Stone
Road / SE 282nd



Cedar Creek in Gresham



Brick Creek in Gresham



Upper Butler Creek