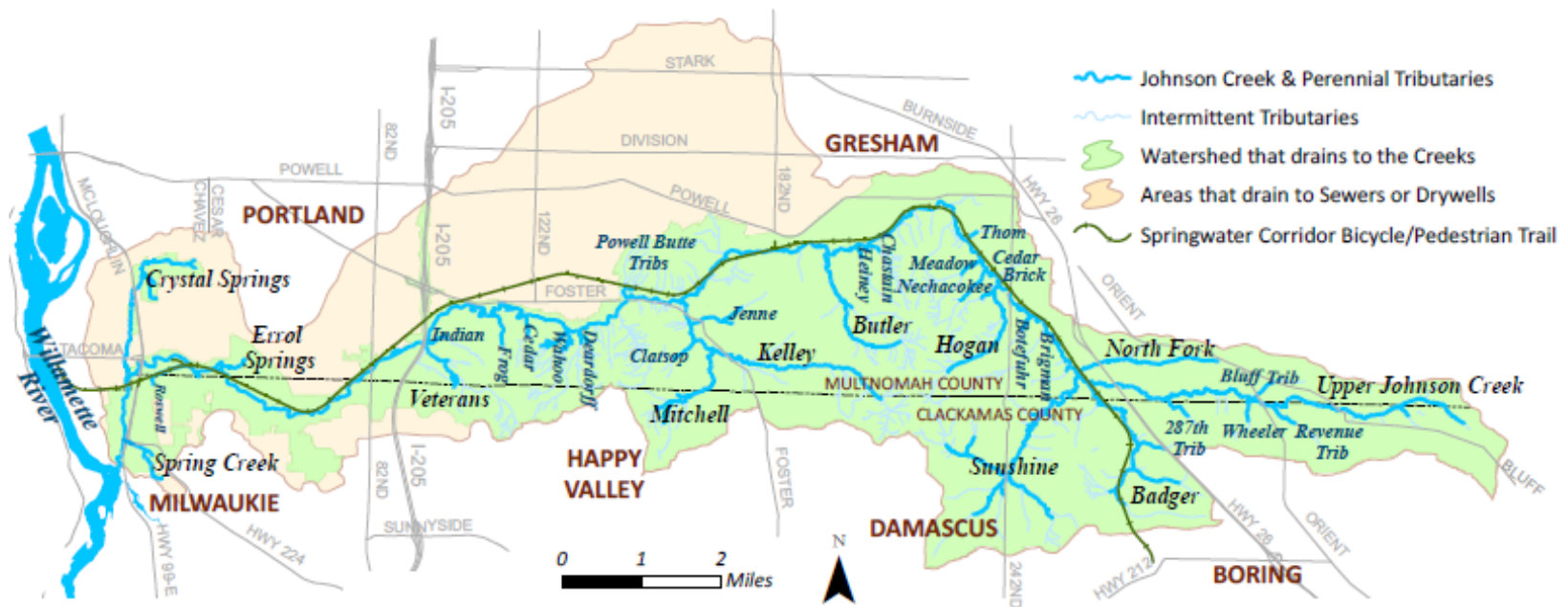


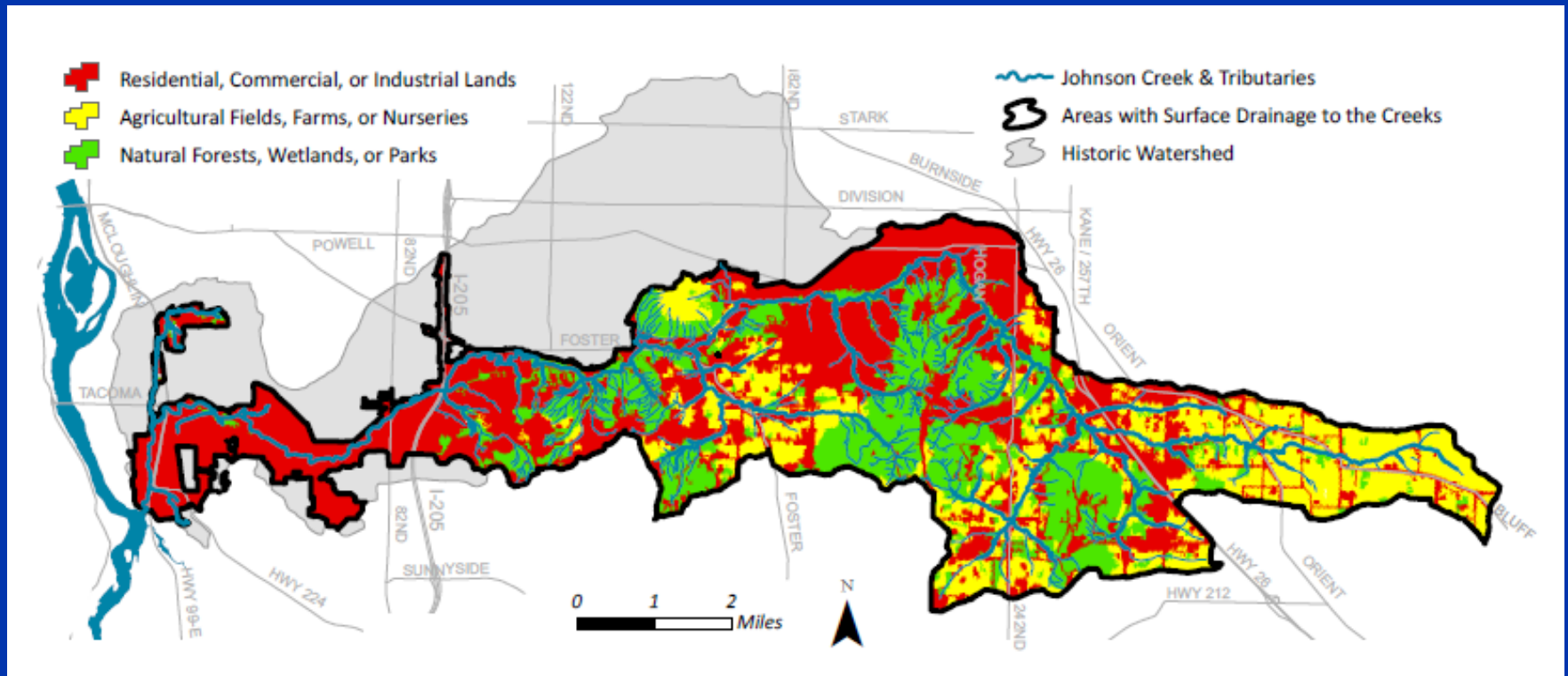


The Hydrology of Johnson Creek

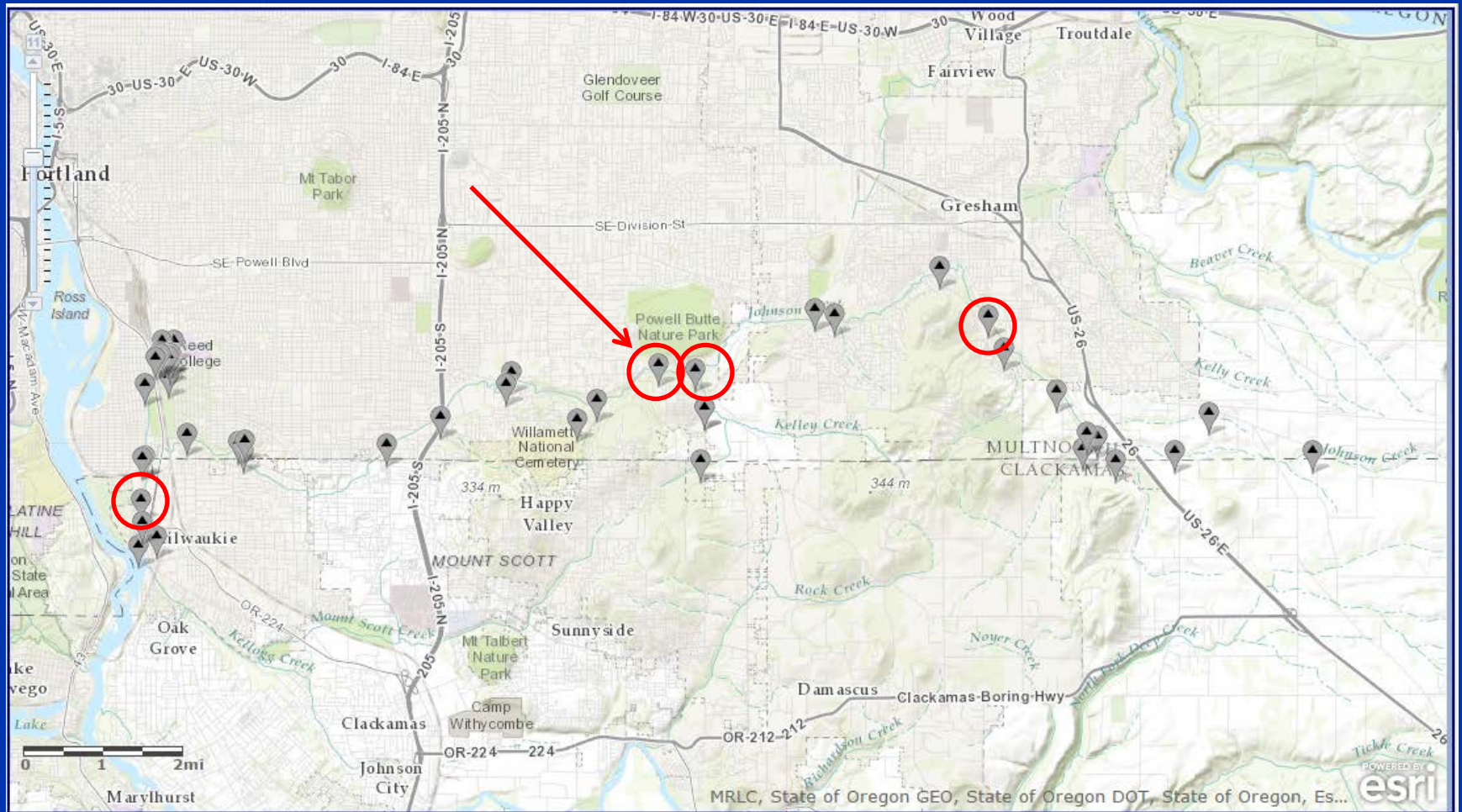
Adam Stonewall, USGS Oregon Water Science Center
Johnson Creek Science Symposium—May 21, 2015



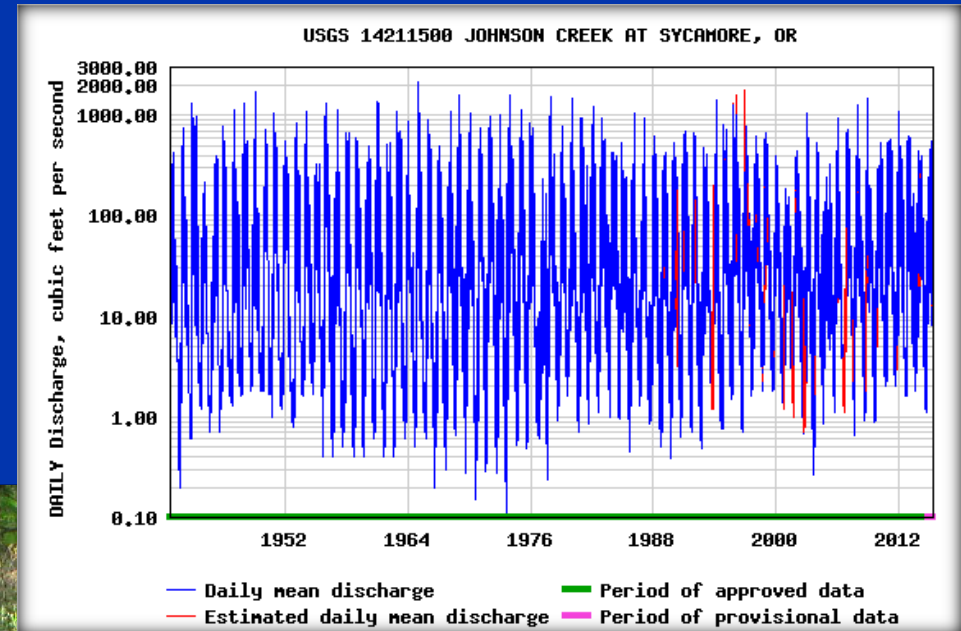
Landscape patterns



Stream sites measured by the USGS in the Johnson Creek watershed



Sycamore gage

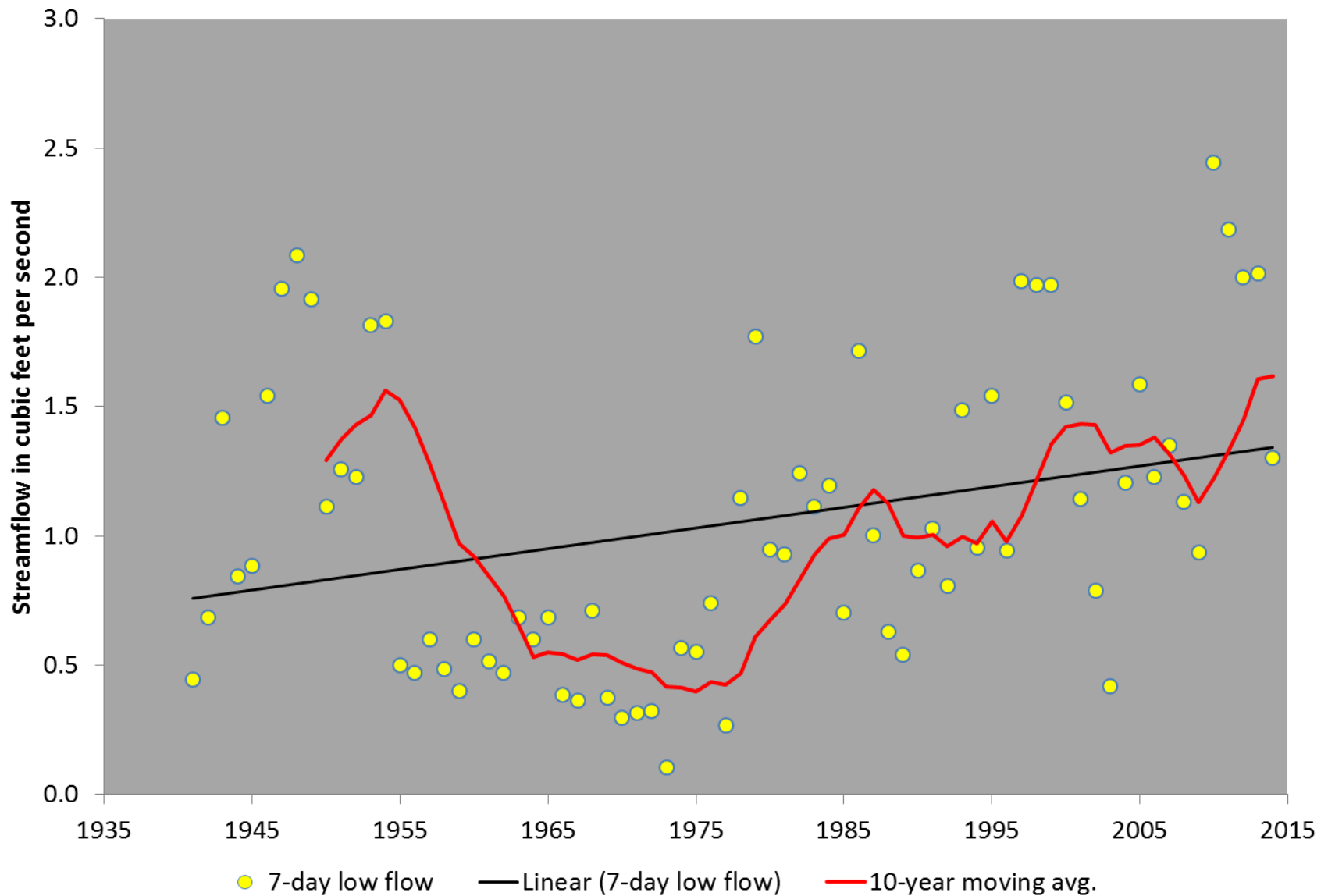


Source: USGS NWISWeb, <http://waterdata.usgs.gov/or/nwis/>

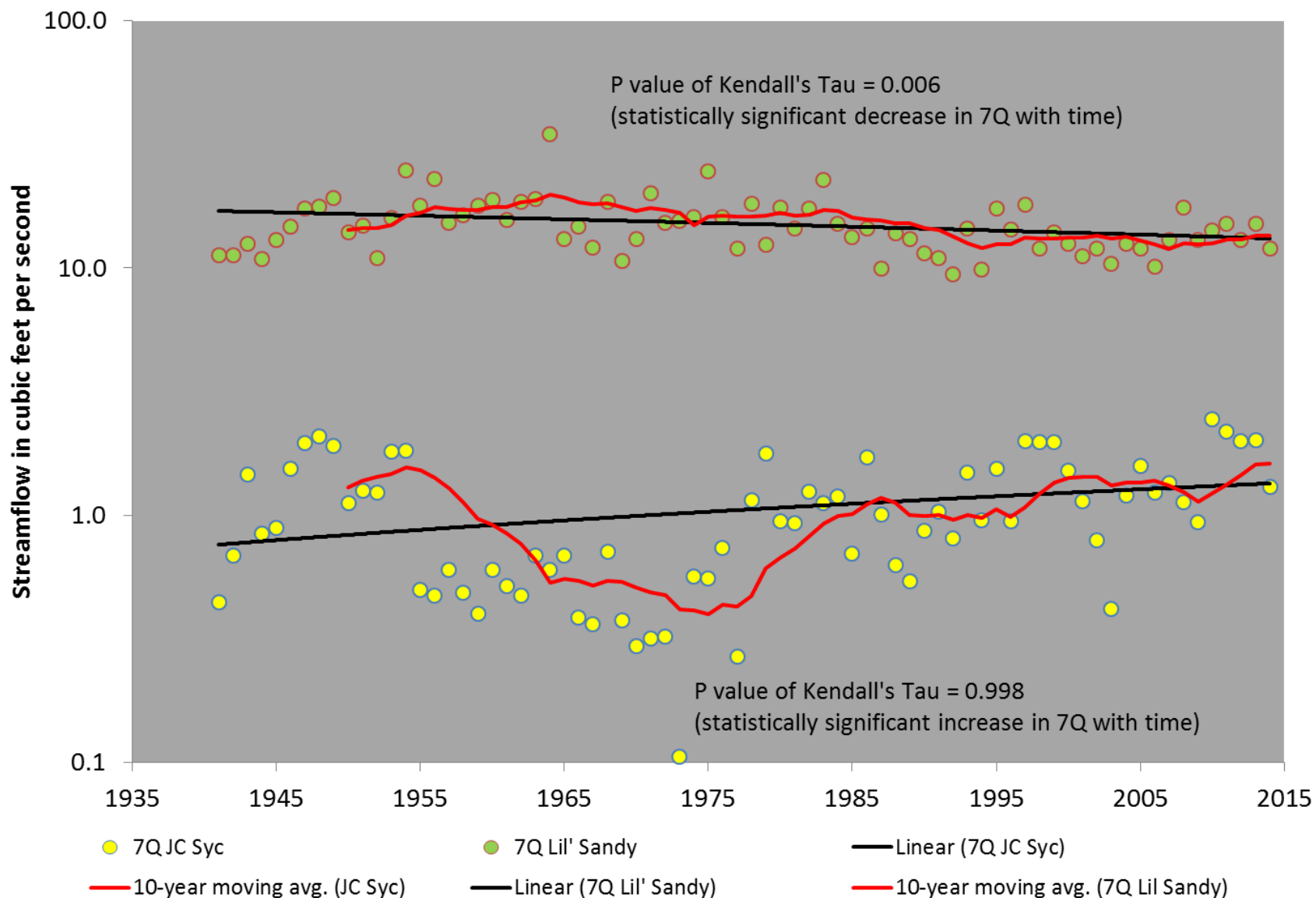
Changes to watershed over time



7-Day low flows at Johnson Creek Sycamore gage



Comparison of 7-Day low flows at Johnson Creek and Little Sandy River





Number of high-flow events per year at Johnson Creek Sycamore gage

