

# Science Collaboration

Remarkable degree of collaboration between

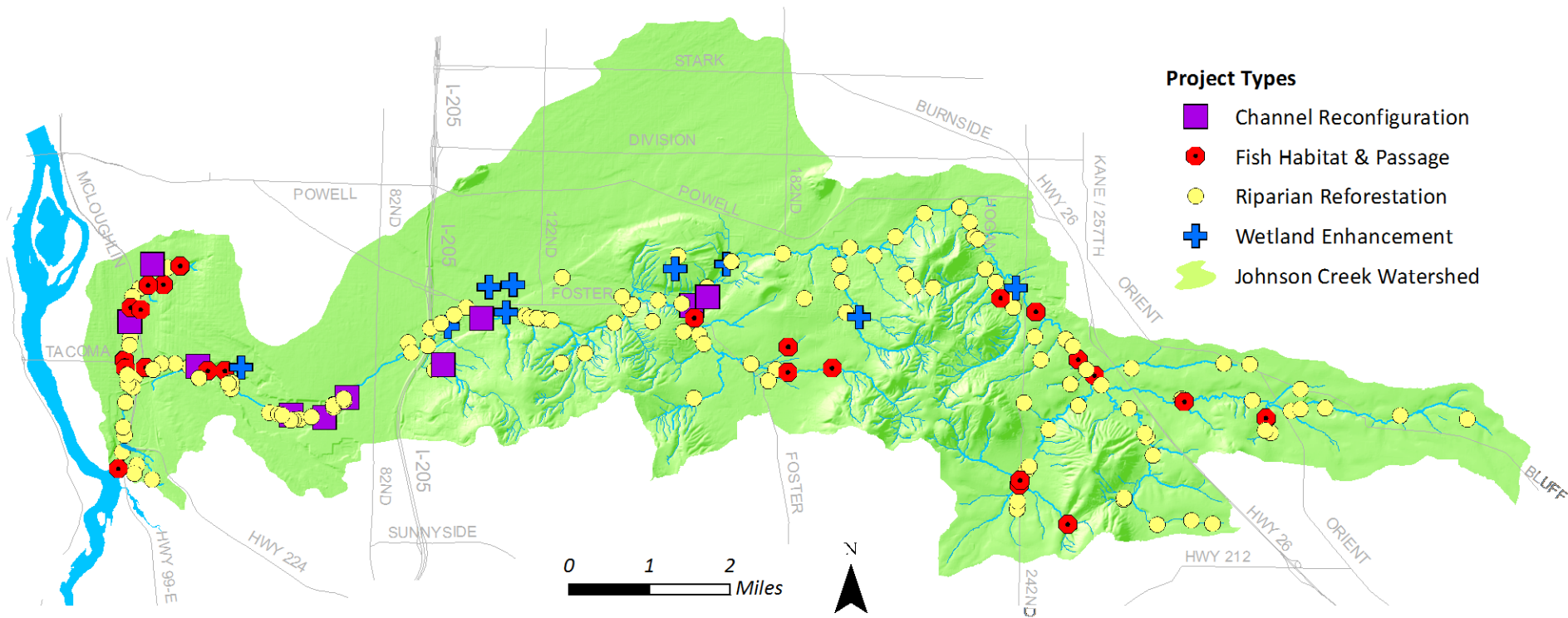
- the Cities
- Counties and Metro
- State agencies
- Soil and Water Conservation Districts
- USGS
- Nonprofit organizations
- Academia

# Knowledge of the watershed

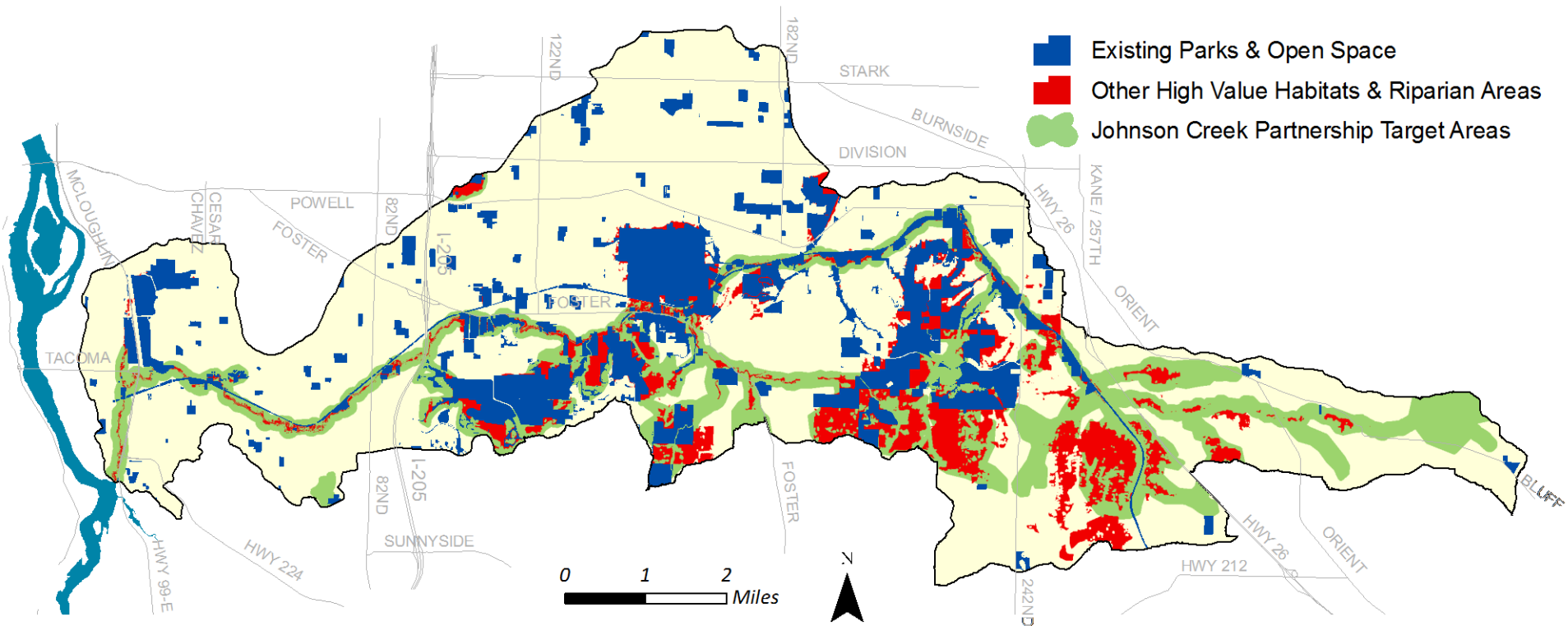
IJC has worked extensively to better understand conditions, stressors, and sources

- Temperature, Macroinvertebrate, and Bacteria monitoring
- Heat source model and riparian conditions by taxlot
- Electrofishing surveys to determine extent and assemblages of fish species
- Fish passage barriers survey and Coho spawning surveys
- Ponds mapping project
- USGS Total Suspended Sediment Report
- Tributary Hydrology citizen science & USGS project

~150 projects have been implemented by all partners over the last 20 years



# Good restoration opportunities exist



As we better understand conditions and stressors there is significant good news about how conditions are changing and about opportunities for positive change

# Panel on 2015 Watershed Conditions